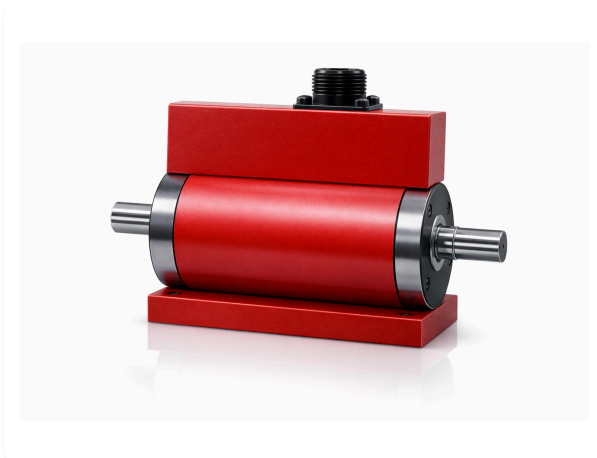


# ROTARY TORQUE SENSOR

## PRODUCT DATASHEET



### PRECISION ROTARY TORQUE MEASUREMENT

Jragrau Rotary Torque Sensors (Optical Type) are designed for accurate measurement of dynamic torque in rotating shafts. Using non-contact optical signal transmission, the sensor ensures stable output, minimal signal loss, and reliable performance in continuous industrial and laboratory testing applications.

### KEY FEATURES

- Non-contact optical signal transmission
- High accuracy under dynamic rotation
- Stable output with low hysteresis

### APPLICATIONS

- Motor and drivetrain testing
- Automotive and transmission testing
- Dynamic torque measurement systems

### TECHNICAL SPECIFICATIONS

PARAMETER	METRIC (SI)
Capacity Range	5, 10, 20, 50, 100, 500, 1k, 2k, 5k, 10k, 20k Nm
Rated Output	2 mV/V
Safe Overload	150% of Rated Output
Zero Balance	±0.05% of Rated Output
Non-Linearity	±0.05% of Rated Output
Repeatability	±0.05% of Rated Output
Hysteresis	±0.05% of Rated Output

# ROTARY TORQUE SENSOR

## PRODUCT DATASHEET

---

### PHYSICAL & BUILD

---

- Optical non-contact construction
- Designed for continuous rotation

**Coupling Type:** Keyway Type

---

**Operating RPM Range:** 0 to 500 RPM

### ELECTRICAL & TEMPERATURE CHARACTERISTICS

VALUE	LABEL
10 V DC (Maximum)	Excitation Voltage
±0.01% of Rated Output	Temperature Shift (Zero)
±0.02% of Rated Output	Temperature Shift (Span)
25 °C to 50 °C	Compensated Temperature Range
0 °C to 50 °C	Operating Temperature Range